



Echos  
COLOR

Echosline  
the *vegan* way

# Echos COLOR



La nuova crema colorante per capelli Echos Color, formulata senza Resorcina e Parafenilendiamina, contiene estratto di Tè Verde antiossidante, Olio di Tsubaki protettivo e Olio di Dattero remineralizzante.

Offre intensità, lucentezza e durata nelle 75 tonalità di colore.

## NOVITÀ TECNICHE

- Ogni tonalità della nuova colorazione EchosColor copre i capelli bianchi al 100%.
- In particolare i nuovi Pure Naturals .0 e Ice Naturals .0 Ice, donano una copertura compatta e profonda dai riflessi estremamente naturali e naturali freddi, anche su capelli bianchi e grossi.
- Le innovative tonalità fredde Cold Brown .7 Cold e Extra Cold .11 garantiscono controllo e neutralizzazione dei toni caldi indesiderati.
- Scopri l'innovativa serie Pure Colors per liberare la creatività e la nuova serie 12/ Blonde Extra Lift anti-giallo, che arriva fino a 5 livelli di schiaritura.

	MIX RATIO
.0 NATURALI PURI	
.0 Ice NATURALI FREDDI	
.11 EXTRA FREDDI	
.7 Cold MARRONI FREDDI	
.7 MARRONI / SABBIA PURI	
.32 NUDE BEIGE	
.72 MARRONI CALDI	
.3 DORATI PURI	1:1,5
.34 DORATI RAME	50ml Echos Color
.43 RAME DORATI	+
.4 RAMATI PURI	75ml Echos Oxy
.44 RAMATI EXTRA	
.66 ROSSI PURI	min 30-35
.666 ROSSI EXTRA	tempo di posa
.55 MOGANO PURI	
.22 VIOLA PURI	
.26 VIOLA ROSSI	
Colori Puri ROSSI - ARANCIO - ORO - TURCHESE INDACO - VIOLA - CENERE - TRASPARENTE	
12/ BLONDE EXTRA LIFT	1:2 50ml Echos Color +
	100ml Echos Oxy min 45-50 tempo di posa



The new hair colouring cream Echos Color, formulated without Resorcinol and Paraphenylenediamine, contains antioxidant Green Tea extract, protecting Tsubaki Oil and remineralising Desert Date Oil.

It offers intensity, shine and long-lasting in the new 75 color shades.

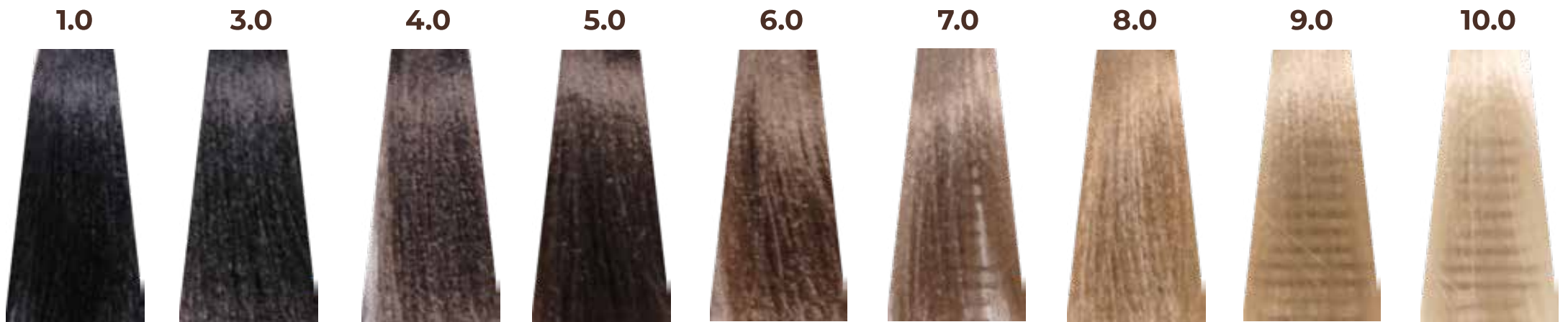
## TECHNICAL INNOVATIONS

- Every shade of the new EchosColor line covers up to 100% grey hair.
- In particular, the new Pure Naturals .0, and Ice Naturals .0 Ice, give a solid and deep coverage with extremely natural and natural cold reflects, including on grey and coarse hair.
- The innovative cold shades Cold Brown .7 Cold and Extra Cold .11 ensure control and neutralization of undesired warm tones.
- Discover the innovative Pure Colors series to unleash the creativity and the new 12/ Blonde Extra Lift anti-yellow series, that reaches up to 5 levels of lightening.



	MIX RATIO
.0 PURE NATURALS	
.0 Ice ICE NATURALS	
.11 EXTRA COLD	
.7 Cold COLD BROWN	
.7 PURE BROWN / PURE SAND	
.32 NUDE BEIGE	
.72 WARM BROWN	
.3 PURE GOLD	1:1,5
.34 GOLD COPPER	50ml Echos Color
.43 COPPER GOLD	+
.4 PURE COPPER	75ml Echos Oxy
.44 EXTRA COPPER	
.66 PURE RED	min 30-35
.666 EXTRA RED	processing time
.55 PURE MAHOGANY	
.22 PURE VIOLET	
.26 VIOLET RED	
Pure Colors RED-ORANGE-GOLD-TURQUOISE INDIGO-VIOLET-ASH-CLEAR	
12/ BLONDE EXTRA LIFT	1:2 50ml Echos Color +
	100ml Echos Oxy min 45-50 processing time

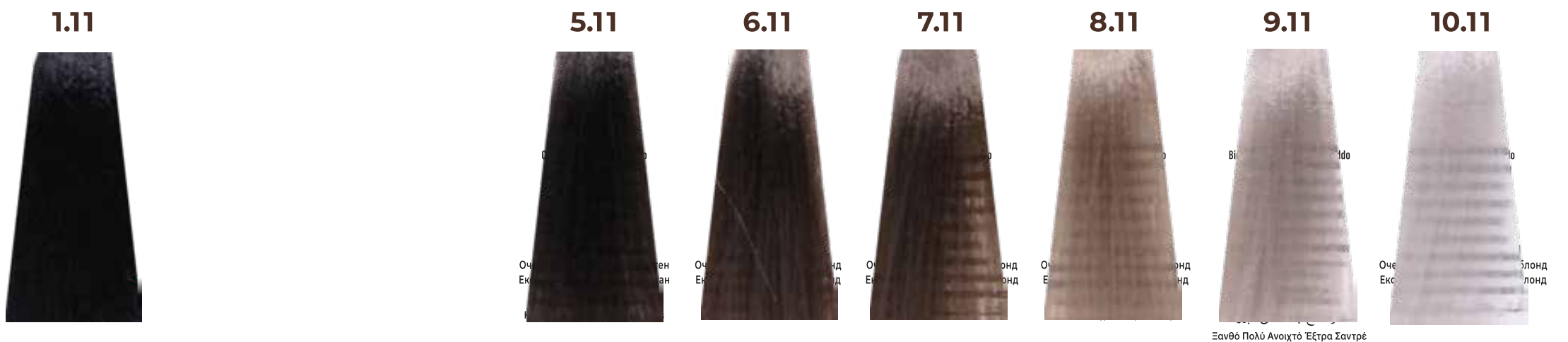
## PURE NATURALS



## ICE NATURALS



## EXTRA COLD





Echos  
COLOR

ORGANIC GREEN  
TEA EXTRACT

keeps the color longer.

ESTRATTO DI THE VERDE BIOLOGICO  
mantiene il colore più a lungo.

EXTRACTO DE TÉ VERDE ORGÁNICO  
mantiene el color por más tiempo.

EXTRAIT DE THÉ VERT BIO  
conserve la couleur plus longtemps.

GRÜNTEE-EXTRAKT AUS BIOLOGISCHEM ANBAU  
Behält die Farbe länger bei.

EXTRATO DE CHÁ VERDE ORGÂNICO  
mantém a cor por mais tempo.

WYCIĄG Z ZIELONEJ HERBATY  
Z UPRAW BIOLOGICZNYCH  
Dłuższe zachowanie koloru.

ЭКСТРАКТ ОРГАНИЧЕСКОГО ЗЕЛЁНОГО ЧАЯ  
дольше сохраняет цвет волос.

ΕΚΣΤΡΑΚΤ ΟΡΓΑΝΙΧΟΝΟ ΖΕΛΕΝΟΓΟ ΤΣΑΓΙΟΥ  
сприяє збереженню кольору.

خلاصة الشاي الأخضر العضوي  
تحافظ على اللون لفترة أطول

ΕΚΧΥΛΙΣΜΑ ΒΙΟΛΟΓΙΚΟΥ ΠΡΑΣΙΝΟΥ ΤΣΑΓΙΟΥ  
διατηρεί το χρώμα για μεγαλύτερο χρονικό διάστημα.

## COLD BROWN

4.7 Cold



Καστανό Μεσαίο Καφέ Ψυχρό

5.7 Cold



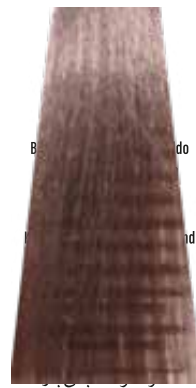
Καστανό Ανοιχτό Καφέ Ψυχρό

6.7 Cold



Ξανθό Σκούρο Καφέ Ψυχρό

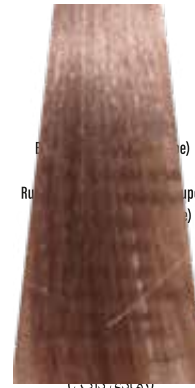
7.7 Cold



Ξανθό Μεσαίο Καφέ Ψυχρό

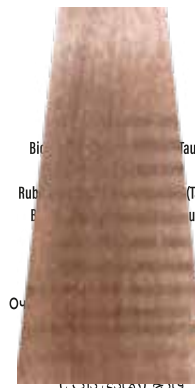
## NUDE BEIGE

8.32 Nude



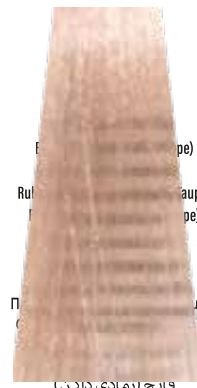
Ξανθό Ανοιχτό Ταυρε (τρυγόνι)

9.32 Nude



Ξανθό Πολύ Ανοιχτό Ταυρε (τρυγόνι)

10.32 Nude



Ξανθό Πλατινέ Ταυρε (τρυγόνι)

## PURE BROWN

5.7



6.7



7.7



8.7



9.7



10.7



## WARM BROWN

4.72



Καστανό Μεσαίο Καφέ Ζεστό

5.72



Καστανό Ανοιχτό Καφέ Ζεστό

6.72



Ξανθό Σκούρο Καφέ Ζεστό

7.72



Ξανθό Μεσαίο Καφέ Ζεστό



Echos  
COLOR

DESERT  
DATE OIL

purifies and  
revitalizes.

OLIO DI DATTERO - purifica e rivitalizza.

ACEITE DATE - purifica y revitaliza.

HUILE DE DATE - purifie et revitalise.

DATTELÖL - Reinigt und belebt.

DATE OIL - purifica e revitaliza.

OLEJEK Z DAKTYLI - oczyszczenie i witalność.

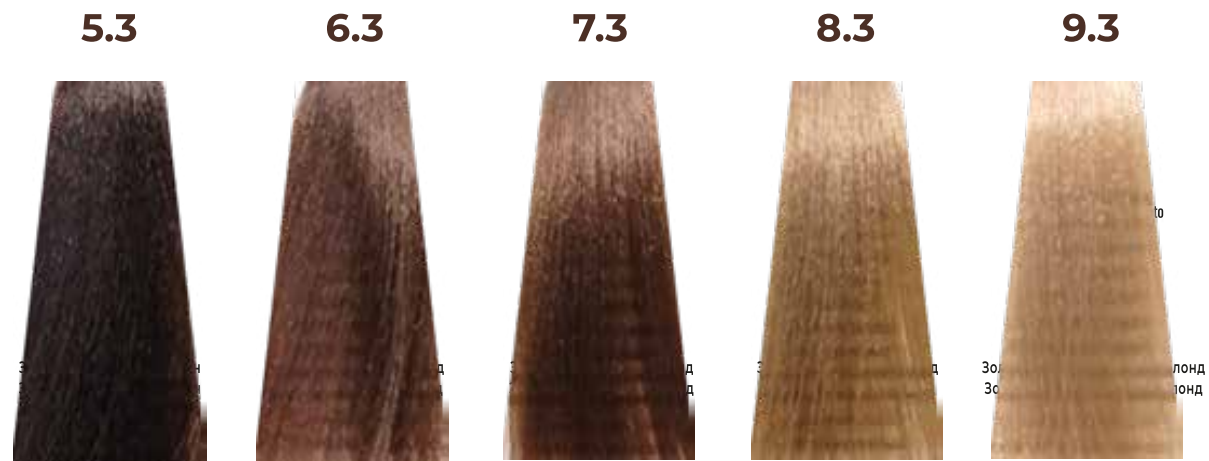
ФИНИКОВОЕ МАСЛО - очищает и восстанавливает.

ФІНІКОВЕ МАСЛО - очищає і відновлює.

زيت التمر - ينقي وينشط.

ΕΛΑΙΟ ΧΟΥΡΜΑ - καθαρίζει και αναζωογονεί.

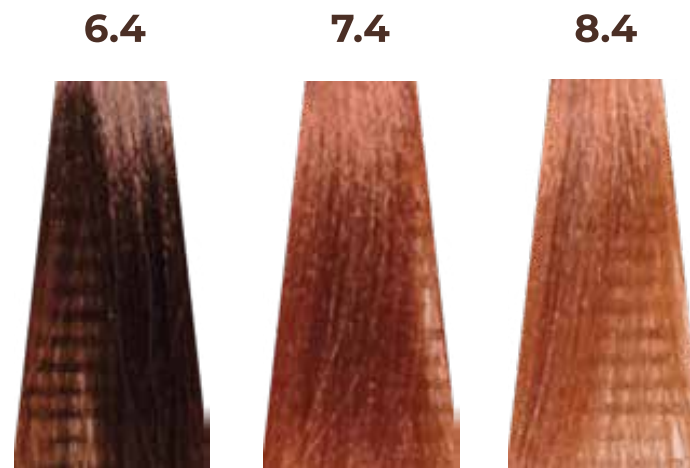
## PURE GOLD



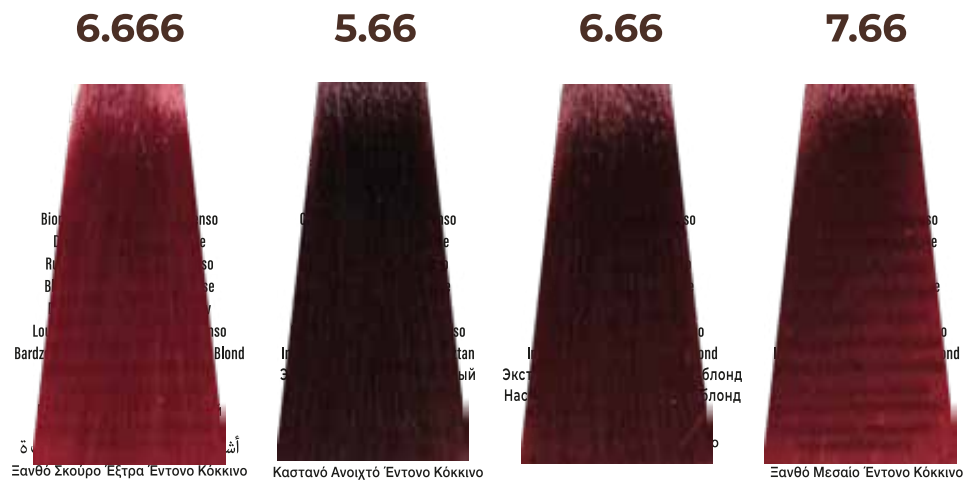
## COPPER GOLD



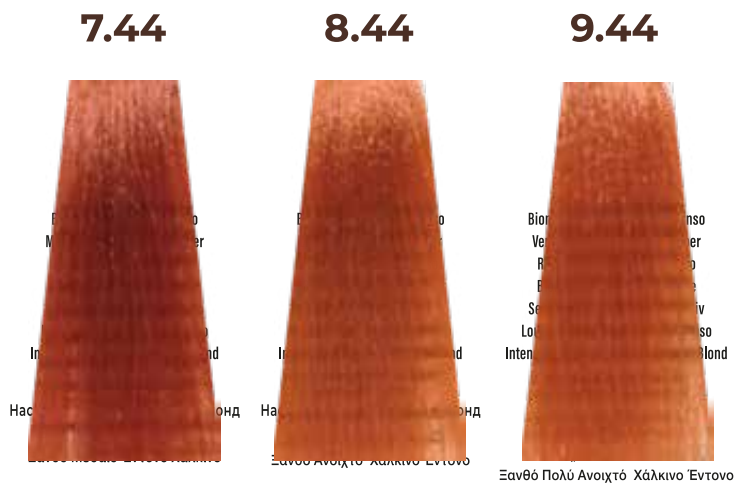
## PURE COPPER



## PURE RED



## EXTRA COPPER





Echos  
COLOR

TSUBAKI  
OIL

softens and  
gives shine.

OLIO DI TSUBAKI - nutre e illumina.

ACEITE DE TSUBAKI - suaviza e ilumina.

HUILE DE TSUBAKI - adoucit et illumine.

TSUBAKI-ÖL - Spendet Nährstoffe und Strahlkraft.

ÓLEO DE TSUBAKI - suaviza e ilumina.

OLEJEK Z TSUBAKI - odżywienie i blask.

МАСЛО ЦУБАКИ - питает и придаёт блеск.

МАСЛО КАМЕЛІЇ - живить і додає блиск.

زيت تسوباکي - يغذي ويمنح مزيدا من الإشراف

ΕΛΑΙΟ ΤΣΟΥΜΠΑΚΙ - θρέφει και χαρίζει φωτεινότητα.



## PURE MAHOOGANY

4.55



5.55



## PURE VIOLET

4.22



Καστανό Ισσοσίδηρο Έντονο Βιολέ

5.22



Καστανό Ανοιχτό Έντονο Βιολέ

6.26



Καστανό Ανοιχτό Βιολέ Κόκκινο

## PURE COLORS

Red



Orange



Gold



Turquoise



Indigo



Violet



Ash

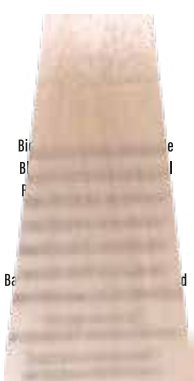


Clear



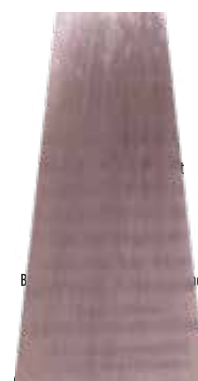
## BLOND EXTRA LIFT

12/0



Ξανθό Έξτρα Πλατινέ Φυσικό

12/22



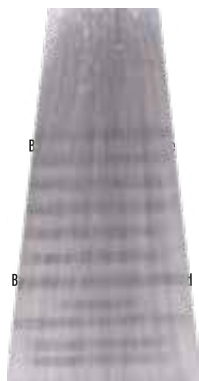
Ξανθό Έξτρα Πλατινέ Βιολέ

12/11



Ξανθό Έξτρα Πλατινέ Σαντρέ

12/88



Ξανθό Έξτρα Πλατινέ Ψυχρό

## BLOND EXTRA LIFT RESULTS

ON NATURAL HAIR LEVEL 6

12/0



12/22



12/11

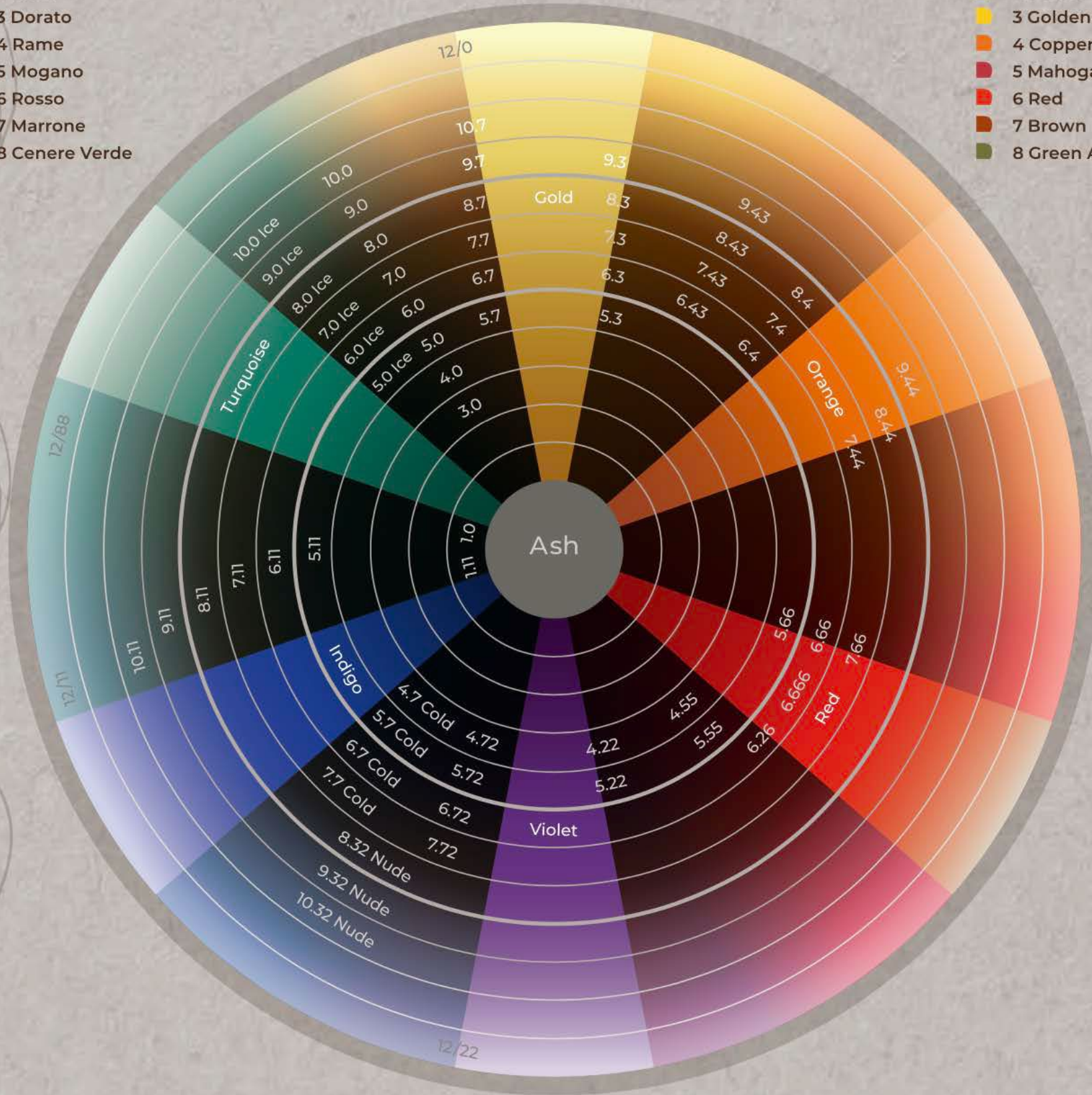


12/88



- 0 Naturale
- 1 Cenere Blu
- 2 Viola
- 3 Dorato
- 4 Rame
- 5 Mogano
- 6 Rosso
- 7 Marrone
- 8 Cenere Verde

- 0 Natural
- 1 Blue Ash
- 2 Violet
- 3 Golden
- 4 Copper
- 5 Mahogany
- 6 Red
- 7 Brown
- 8 Green Ash



CREDITS  
Hair: Echoline Stylistic Team  
Photo: Marco Di Filippo

**Echoline**  
the *Vegan* way

www.echoline.it



echoline.official

PETTENON COSMETICS S.p.A. S.B. - Via del Palù, 7/D | 35018 San Martino di Lupari (PD) ITALIA  
Cod. Fisc., P.Iva e Registro delle Imprese di Padova n. 04937500280, R.E.A. PD 430007  
Cap. Soc. € 5.000.000,00 i.v., società soggetta a direzione e coordinamento di AGF88 Holding S.r.l.

cod. 8024263



©2021 Pettenon S.p.A. S.B.  
All Rights Reserved